

STE

Electric water heater

STE - 400/500/600/750/1000



PermaGlas Ultra Coat second-generation glass coating technology prevents tank corrosion • Insulated ring base • Insulated access cover for comprehensive waterside maintenance • Replaceable magnesium anode • Temperature and pressure valve • Options: Flexible magnesium anode for installation in confined areas • Powered anode for reduced maintenance requirements • Analogue temperature gauge (0-120°C)

Technical specifications

		STE 400	STE 500	STE 600	STE 750	STE 1000
Technical data						
Storage capacity	L	405	499	678	763	1055
Maximum working pressure tank	kPa (bar)	1000 (10)				
Maximum operating temperature tank	°C	95				
Standby loss	kWh/24u	1.60	1.88	1.85	2.03	2.19
Shipping data						
Weight empty	kg	99	131	179	201	262
Maximum weight	kg	504	630	857	964	1317
Weight incl. packaging	kg	110	142	190	212	274
Width packaging	mm	780	780	870	870	1010
Height packaging	mm	1850	2150	1930	2150	2100
Depth packaging	mm	780	780	870	870	1010

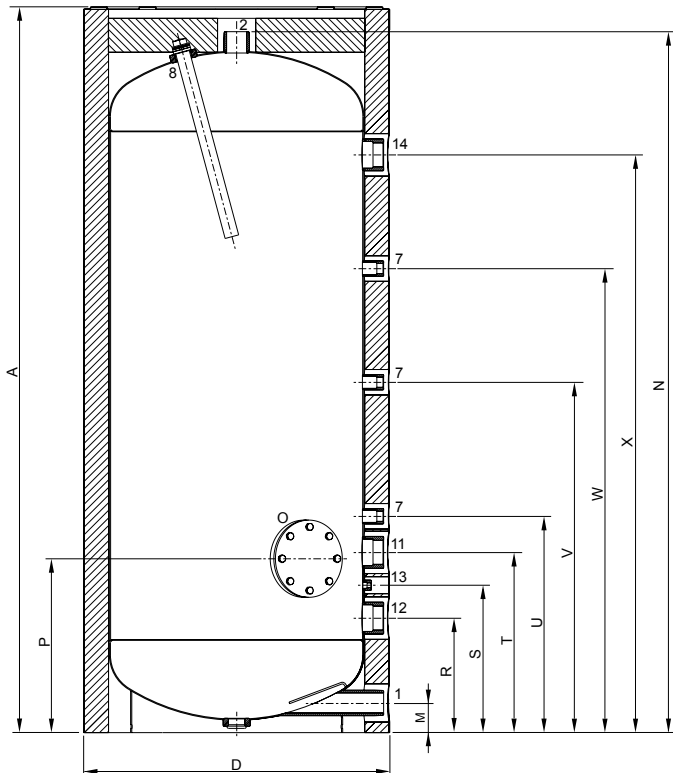
		rec/hr l@45 °C Rise	STE 400	STE 500	STE 600	STE 750	STE 1000
Heating elements			1st hour delivery L / 60°C				
6	Kw	115	435	515	658	725	959
7.5	Kw	143	463	543	686	753	987
9 (2 x 4.5)	Kw	172	492	572	715	782	1016
12 (2 x 6)	Kw	230	550	630	772	840	1074
15 (2 x 7.5)	Kw	287	607	687	830	900	1131
18 (3 x 6)	Kw	344	664	744	890	960	1188
22.5 (3 x 7.5)	Kw	430	750	830	975	1050	1274
Power supply			400-3-50/60				

Dimensions

			STE 400	STE 500	STE 600	STE 750	STE 1000
A	Total height	mm	1705	2040	1835	2030	2000
D		mm	720	720	910	910	1060
M		mm	70	70	85	85	95
N	Hot water connection	mm	1650	1990	1797	1992	1962
O		mm	115	115	180	180	180
Ox		°	60	60	60	60	60
P		mm	410	410	493	493	530
R		mm	270	270	315	315	360
S		mm	348	348	400	400	445
T		mm	425	425	485	485	530
U		mm	510	510	650	650	700
V		mm	826	995	1040	1080	1100
W		mm	1094	1348	1255	1374	1351
X		mm	1362	1700	1466	1662	1592
1	Cold water	-	R2	R2	R21/2	R21/2	R21/2
2	Hot water	-	R2	R2	R21/2	R21/2	R21/2
7	Connection	-	Rp3/4	Rp3/4	Rp3/4	Rp3/4	Rp3/4
7a	Connection	-	-	-	-	-	-
8	Anode connection	-	Rp11/4	Rp11/4	Rp11/4	Rp11/4	Rp11/4
11	Connection	-	Rp2	Rp2	Rp2	Rp2	Rp2
12	Connection	-	Rp2	Rp2	Rp2	Rp2	Rp2
13	Connection temperature sensor	-	Rp1/4	Rp1/4	Rp1/4	Rp1/4	Rp1/4
14	Connection	-	Rp2	Rp2	Rp2	Rp2	Rp2

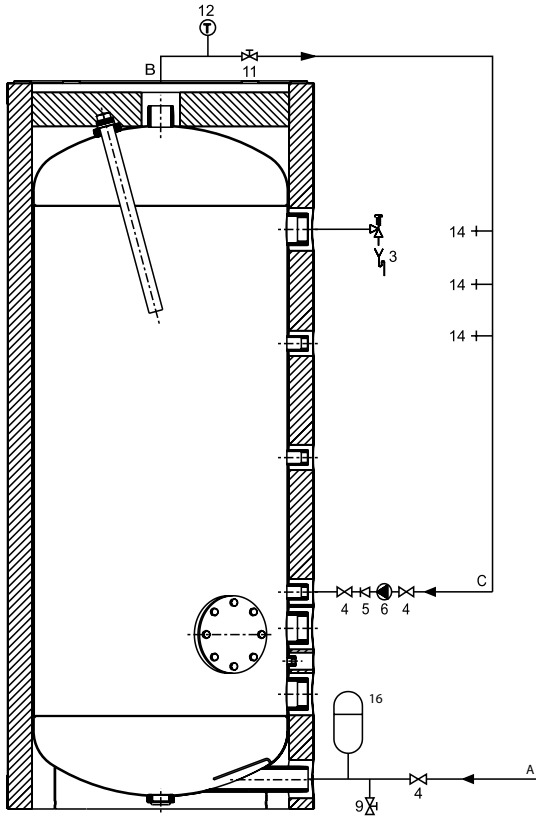
Dimensions in mm.

STE 400-1000



Dimensions

STE 400-1000



- 1 Pressure reducing valve
- 3 T&P valve
- 4 Stop valve
- 5 Non-return valve
- 6 Circulation pump
- 9 Drain valve
- 11 Service valve
- 12 Temperature meter
- 14 Hot water tap
- 16 Expansion vessel

- A Cold water supply
- B Hot water outlet
- C Circulation pipe

Further installation and connection details can be found in the Installation & Commissioning Manual.